

# BEF-TISC-BKT



OPTEX FA CO., LTD.

Thank you for the purchase of the “BEF-TISC-BKT.”  
This product is an optional product exclusively for the TI-SC(E).  
Before using this product, read this manual carefully to ensure proper use.  
Read this manual thoroughly, and then keep this manual at hand so that it can be used whenever necessary.

## Safety Precautions

Safety precautions for ensuring safe operation of this product are displayed as follows with the following symbols.  
Precautions listed here describe important information about safety. Make sure to follow them accordingly.

### Safety Symbols

|  |                |   |
|--|----------------|---|
|  | <b>WARNING</b> | Indicates that any improper operation or handling may result in moderate or minor injury, and in rare cases, serious injury or death. Also indicates a risk of serious property damage. |
|  | <b>CAUTION</b> | Indicates that any improper operation or handling may result in minor injury or property damage.  |

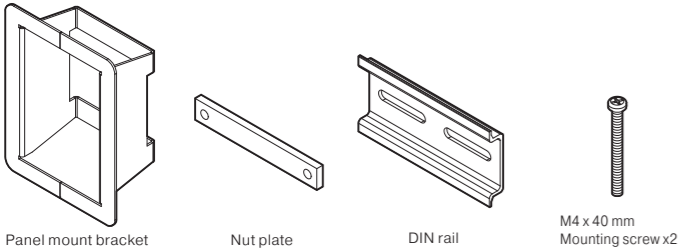
| <b>WARNING</b> |  |
|----------------|--|
|                | Do not disassemble, repair, modify, deform under pressure, or attempt to incinerate this product. Doing so may cause injury or fire.   |
|                | Do not use this product other than for the TI-SC(E). Doing so may cause a malfunction.   |
|                | This product is not intended for use with nuclear power, railways, aviation, vehicles, medical equipment, food-handling equipment, or any application where particular safety measures are required. Absolutely do not use this product for any of these fields. |

| <b>CAUTION</b> |   |
|----------------|---|
|                | Do not drop the product or subject the product to strong impacts. Doing so may damage the product.  |
|                | Use this product within the rated ranges.   |
|                | When installing this product on sensor head, use the screws of included to ensure secure installation. Failure to ensure secure installation can result in the products falling and becoming damaged. |

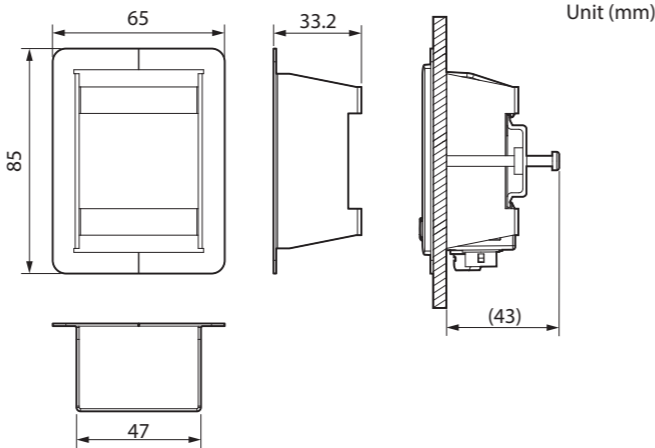
### Handling Precautions

- After carefully considering the intended use, required specifications, and usage conditions, install and use the product within the specified ranges.
- If installing this product in your own equipment, ensure that the product is properly handled according to the laws and regulations of the relevant country or region. When using this product, it is the responsibility of the customer to ensure necessary safety designs in hardware, software, and systems in order to prevent any threat to life, physical health, and property due to product malfunction or failure.
- Before using this product, fully examine the applicable environmental laws and regulations, and operate the product in conformity to such laws and regulations. OPTEX FA does not assume any responsibility for damages or losses occurring as a result of noncompliance with applicable laws and regulations.

## 1. Included Items

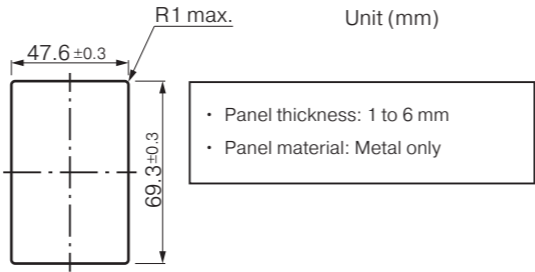


## 2. Dimensions

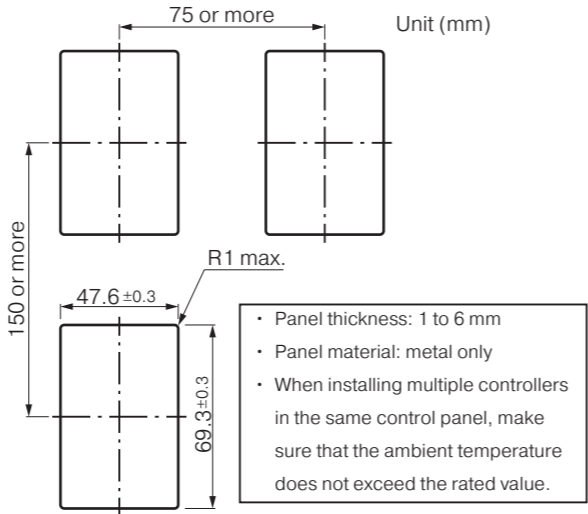


## 3. Panel Opening Drawings

### Single mounting

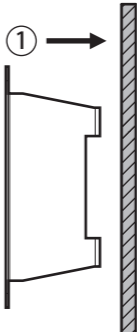


### Multiple mounting

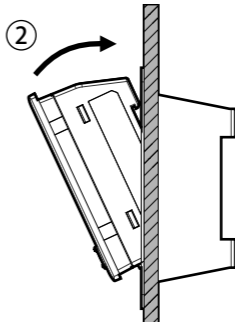


## 4. Installation

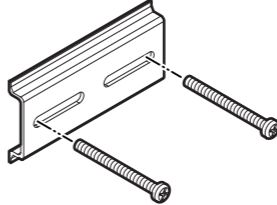
- Attach the Panel Mount Bracket to a panel with an opening.



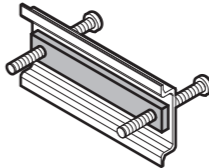
- Attach the controller to the Panel Mount Bracket.



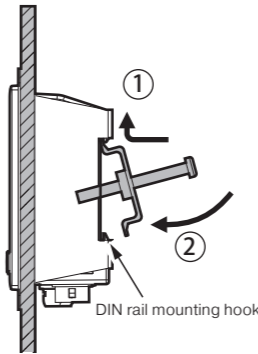
- Insert the screws into the elongated DIN rail mounting holes from the direction shown in the figure.



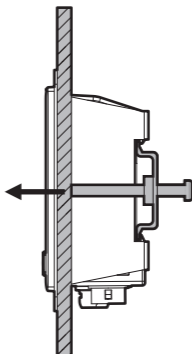
- Insert the screws through the Nut Plate.



- Hook the upper hook (indicator side) to the DIN rail (1), push the DIN rail mounting hook up to lock the product in place (2).



- Tighten the screws to secure the DIN rail to the panel. The tightening torque should be **0.15 N•m or less**.



## 5. Specifications

| Model                  | BEF-TISC-BKT  |
|------------------------|---|
| Ambient temperature    | 0 to +50 °C   |
| Ambient humidity       | 35 to 85%RH (no condensation)   |
| Storage temperature    | -20 to +70 °C   |
| Applicable regulations | RoHS Directive (2011/65/EU), China RoHS (MIIT Order No.32) UK RoHS (The Restriction of the Use of Certain Hazardous Substances in Electrical and Electronic Equipment Regulations 2012) |
| Material               | Panel bracket: Stainless steel, DIN rail: Aluminum, Nut plate: steel  |
| Weight                 | Approx. 90 g  |

- Support for the China RoHS directive  
 For details on the support for the China RoHS (the Administrative Measure on the Control of Pollution Caused by Electronic Information Products), see the following website.  
[https://www.optex-fa.com/rohs\\_cn/](https://www.optex-fa.com/rohs_cn/)
- Specifications are subject to change without notice.
- For more information, questions and comments regarding product, please contact us at the information below.

**OPTEX FA CO., LTD.**

[Headquarters]  
91 Chudoji-Awata-cho, Shimogyo-ku, Kyoto 600-8815 JAPAN  
TEL +81-75-325-1314 FAX +81-75-325-2936

<https://www.optex-fa.com>